

***JACKSON PARK
SOUTH SHORE CULTURAL CENTER***



South Lakefront Framework Plan, Phase 2

1 INTRODUCTION

● Overview

The Chicago Park District (CPD) authorized framework plans for three historic parks: Jackson, Washington and South Shore Cultural Center. In an effort to define the changing needs of these parks, to provide a plan to enhance each of the parks' commitments to serving the neighboring communities and to preserve the intended historic character, the CPD developed this Framework Plan for Jackson Park and South Shore Cultural Center. Washington Park's Framework Plan is a separate report.

A team of consultants, led by JJR, worked with Chicago residents, community supporters and the CPD to develop a long-range plan for each of the parks, building on the Jackson Park Guidelines of 1996. Through 10 public meetings, 13 focus groups, numerous steering committee meetings and community presentations, a collaborative plan was developed to address each park's issues.

● Objectives

The purpose of the Framework Plan is to outline recommendations that will guide land use and management over the next 10 years for Jackson Park and the South Shore Cultural Center. Intended as a living, working document, the Framework Plan is a starting point for a long term process of change that will enhance and preserve the park's character, as well as anticipate future needs. The framework plan will address the following objectives:

1. Improve park and recreation facilities for local residents.
2. Improve park and recreation facilities to accommodate regional and city wide events.
3. Involve local residents, concerned civic groups and institutions, park users and advisory councils, Chicago Park District staff, and elected and appointed officials in the planning process to achieve a joint vision for the future that will be promoted and supported by all concerned interests.
4. Recognize and respect the historic significance of these parks.
5. Upgrade the visual quality of park landscapes and facilities.
6. Coordinate project planning for South Lake Shore Drive reconstruction, and other circulation improvements.
7. Restore and enhance shoreline protection systems, including revetments, groins, breakwaters, piers and beaches.

● Next Steps...

To continue the planning process, the collaboration between Park District leadership, the community and park users needs to continue. Additional planning is warranted as ideas move towards implementation.

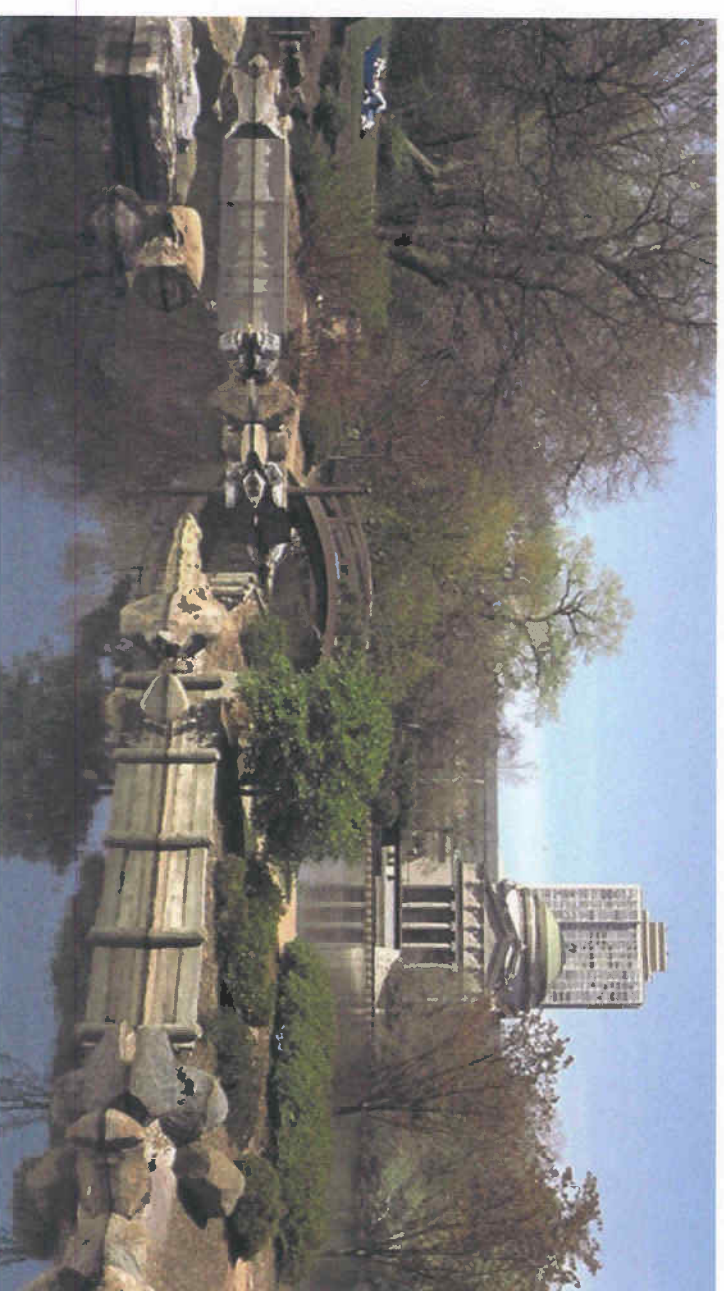
The Jackson Park Advisory Council, the South Shore Cultural Center Advisory Council and the Chicago Park District encourage your participation as this process continues. The Advisory Councils meet regularly at locations in their respective parks. For more information, call the Jackson Park Field House or the South Shore Cultural Center.



South Shore Cultural Center

Mission...

To preserve, enhance and manage our historic lakefront park resources as an integral part of our neighborhoods, our City and our region's recreational, cultural, environmental and educational experience.



Jackson Park

● **Principle 5: Protect and Enhance Landscape Beauty**

- Manage the landscape to reflect and build community appreciation and stewardship.
- Create a cohesive and compelling (predominantly naturalistic) planting design that will be one of the three dominant physical features of each park, along with landforms and water elements.
- Respect the significance of each park's water bodies and their visual and physical qualities.
- Provide more variety and quantity of plant material to provide greater visual, horticultural, ecological and educational interest.
- Establish landscape planting designs that will minimize the noise and visual impact of roadways and parking lots and that will screen and soften architectural elements.
- Examine support facilities (primarily Chicago Park District maintenance shops.) Modify or relocate facilities that unnecessarily disrupt the landscape and park use.
- Balance the objectives of landscape management and design in the placement and distribution of understory species.

● **Principle 6: Improve Environmental Features**

- Maintain and/or change the shape and size of each park-parcel to enhance the environmental, aesthetic and recreational benefits, to provide better wildlife habitat, and to improve maintenance efficiency.
- Use an approach to landscape management and maintenance that considers the parks' historic and ecological quality. Include consideration of environmental impacts in the management and design of recreational uses.
- Improve the water quality in Jackson Park's lagoon and harbor systems.
- Respect and enhance environmentally sensitive areas in each park.
- Provide more variety and quality plant material to provide better, more ecologically sound wildlife habitat and greater visual, horticultural, and educational interest.
- Develop educational and enforcement programs to increase public awareness and appreciation of the park's environmental features.

● **Principle 7: Enhance Historic Features**

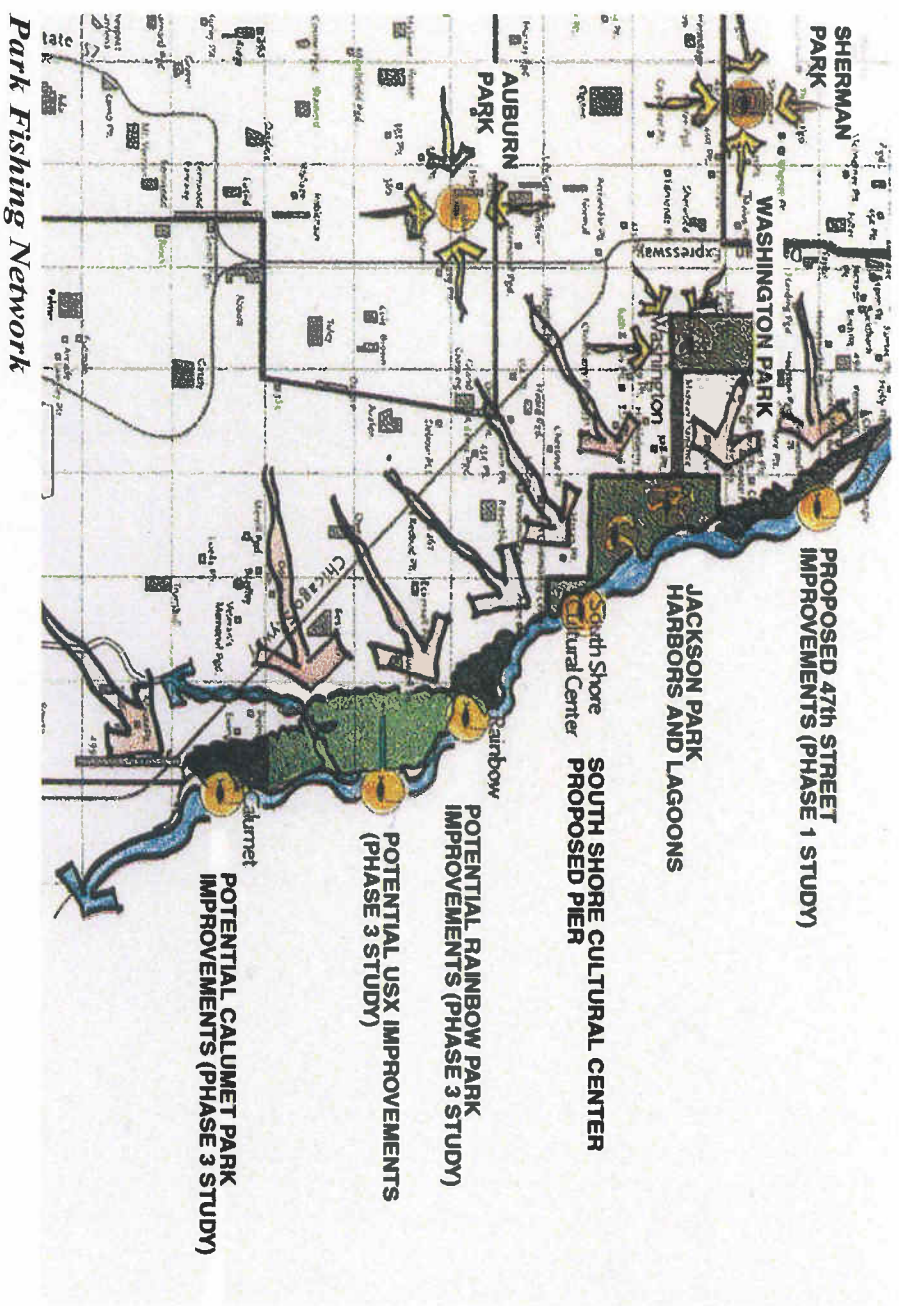
- Respect and enhance each park's historic character, and consider the park's historic significance as a key factor when evaluating changes to the park.
- Provide treatments for historic features that are consistent with the U.S. Department of Interior's Historic Preservation Guidelines.
- Locate and design new structures and features in a way that retains or enhances the historic fabric.
- Remove and/or redesign in a more sympathetic manner, features that detract from the integrity of the historic character of the park, an area or an historic resource.
- Consider the reuse of historic structures before developing new structures, when economically and structurally feasible.
- Consider each park's historic precedents for landscape form, landscape design, planting, circulation, and views when evaluating or designing changes to the park.
- Treat historic structures and features in a manner appropriate to their relative significance.



Japanese Garden, Jackson Park

General Recommendations

1. **Balance System-Wide Athletic Fields/Sports Courts Needs:** Review community needs and capacity for athletic fields/sports courts to determine what belongs in the Washington, Jackson and South Shore Cultural Center Parks and what belongs in community parks.
2. **Golf Needs Assessment:** Explore the feasibility of creating additional opportunities for affordable public golf, both on the north and south sides.
3. **Develop Standards for Fishing Programs:** Create standards for both regional parks and community parks, as well as park-specific recommendations that build upon park-specific opportunities, such as harbors, piers, islands and revetments.
4. **Coordinate Fishing and Nature Programs:** Closely coordinate fishing programs with nature programs to maintain the appropriate balance of public fishing access, education and natural habitat along park water bodies.
5. **Expand Fishing Programs:** Expand both regional and community fishing programs to provide a more diverse range of recreational and educational programming. All fishing programs should be assessed in aggregate to determine the optimal mix.
6. **Balance Regional Boating Amenities:** Coordinate Jackson Park and South Shore Cultural Center recommendations with amenities offered at other facilities in order to create the optimal local and regional mix.
7. **Develop Regional Water Transportation Network:** Connect Jackson Park and South Shore Cultural Center into a regional water transportation network.
8. **Coordinate Regional Boating Opportunities:** Bring together Washington, Jackson and South Shore Cultural Center Park Framework improvements with regional improvements.
9. **Develop Recreation Structure Rehabilitation Schedule:** Review buildings and develop a program for renovation or new construction based on current condition and needs.



59th Street Marina at Jackson Park

General Recommendations

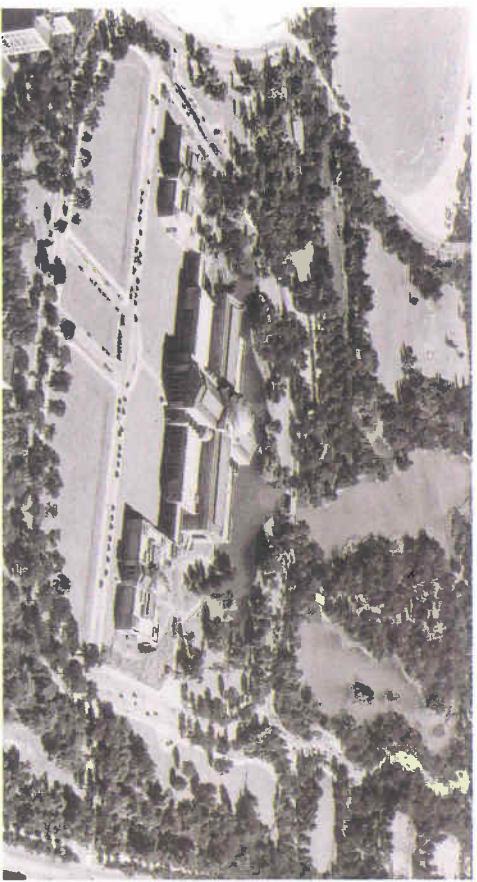
- 1. Develop an Integrated Regional Pedestrian/Bicycle System:** connect Jackson Park, Washington Park and South Shore Cultural Center into a regional pedestrian/bicycle network that includes:
 - Regional park-to-park circulation, including Burnham Park (South Lakefront, Phase 1), and Rainbow, USX and Calumet Park (South Lakefront, Phase 3).
 - Park-to-park circulation between Jackson Park, the Midway Plaisance, and Washington Park.
 - Tourism links to Navy and North Piers, Lakefront Museum Campus and Northerly Island (future), Lincoln Park Museums, and the 63rd Street Beach House.
- 2. Develop an Integrated Regional Cultural Transportation System:** connect Jackson Park, Washington Park and South Shore Cultural Center into a regional cultural network that includes:
 - Regional park-to-park circulation, including the Lakefront Museum Campus and Lincoln Park museums.
 - Park-to-park circulation between the Museum of Science and Industry, DuSable Museum, the University of Chicago Demonstration Gardens and the South Shore Cultural Center.
- 3. Extend the Lakefront Pedestrian/Bicycle Path:** continue to develop the popular Lakefront pedestrian/bicycle path to the south.
- 4. Incorporate Appropriate Traffic Calming Techniques:** include traffic calming techniques as a means of balancing competing demands to make Jackson Park, Washington Park and South Shore Cultural Center more friendly to pedestrians and cyclists.
- 5. Reclaim Park Land:** Jackson Park, Washington Park and South Shore Cultural Center hope to see better stewardship in the future. In the past, decisions were made to widen existing roads, add new road connections, and create parking lots in the name of progress. Proposed circulation improvements related to the Phase 2 Framework are intended to reclaim some of the lost land and result in a net gain of park land.
- 6. Respect Historic Context:** Jackson Park, Washington Park and South Shore Cultural Center have a proud historic heritage. Carefully consider historic context when proposing circulation alterations.
- 7. Implement Traffic Studies to Support Changes:** Jackson Park, Washington Park and South Shore Cultural Center have evolved from accommodating slower horse and carriage traffic to faster moving automobile traffic, often resulting in new and/or wider park roads. As opportunities to remove or narrow roads are proposed as part of the framework planning process, final evaluation should be based on appropriate traffic studies and additional community input.



Cycling in Jackson Park



Nature Walks in Jackson Park



Museum of Science and Industry, Circa 1950



Jackson Park Golf Course

**1936
Works Progress Administration (WPA)**

As part of Jackson Park's improvements funded by the WPA, comfort stations are built at the golf driving range and children's playground. A new maintenance building and passerelle at 63rd Street are also constructed. The 1888 ladies comfort station and Wooded Island are rehabilitated.

**1954-1956
Cold War Intervention**

NIKE anti-aircraft missile launch pads and support facilities are installed on playing fields east of East Lagoon. To compensate for playing fields lost to the NIKE site, the Bayou is filled-in north of the Hayes Drive Bridge, destroying the physical and visual interconnection of the park's water system.

**1965
Traffic Impacts**

After community protests against the widening of South Lake Shore Drive, the consulting firm of Johnson Johnson & Roy was retained to prepare a master plan for a better road through the park. Despite the plan's widely acclaimed recommendations for a depressed road and reduced lanes, the City proceeded with a wide at grade construction.

**1974-1978
Environmental Movement**

The Open Lands Project and CPD co-sponsor 'People in the Park', a program to encourage environmental education and public participation in ecological activities. In 1978, the Paul Douglas Nature Sanctuary is designated on Wooded Island.

**1946
Cultural Loss**

The Ho-o-den, the temple replica that served as the Japanese pavilion during the WCE, is burned down by two boys playing with matches.

1935

1945

1955

1965

1975

1985

1995

2005

**1972
National Register**

Jackson Park is listed on the National Register of Historic Places.

**1999
New Plans and Restoration**

The 63rd Street Bathing Pavilion is restored and an interactive spray fountain is installed. Jackson Park, along with the South Shore Cultural Center and Washington Park, is included in the South Lakefront Framework Plan, Phase 2 study area. The Park District commissioned a consultant, JJR Incorporated, to prepare a Framework Plan to guide the development of these three parks over the next 10 years.



Lake Shore Drive and Hayes Drive

● Key Issues

This park has the benefit of a number of pre-existing studies, including the 1996 Jackson Park Guidelines, 1996 Historic Templates, and the 1998 Recommendations for South Lakewood. It is the intent of this Framework Plan to use these reports as a foundation and to advance their intent.

There are two important studies that are occurring concurrently with the Framework Plan. One is the South Lake Shore Drive Phase 1 Study, and the other is the FY 2000 Lagoon Restoration Program. Both of these studies are being coordinated with the Framework Plan.

- **Maintenance** is the primary issue identified throughout the public process. Jackson Park's maintenance is perceived by many to be of inferior quality for a premier Lakewood park.
- **Wooded Island and the Lagoons** are one of the most highly valued resources in Jackson Park. This degraded woodland ecosystem would benefit from a carefully executed management plan.
- **Environmental Enhancement** should be advanced when possible, since Jackson Park's Lakewood location offers unique opportunities.
- **Lake Shore Drive** is being transformed from an imposing Lakewood barrier to a facility that provides pedestrian/bicycle access to the Lakewood at regular intervals.
- **Pedestrian/Bicycle Access** from the west neighborhoods to the Lakewood is an important link for better connectivity west to east and north to south, as well as along the Lakewood.
- **Field House Adequacy** is a serious concern. Built in 1957, this facility is currently not able to serve the needs of the surrounding communities both in terms of capacity and resources.

- **Historic Context** is an important consideration as one looks at upgrading present conditions and weighing future improvements. The original Olmsted design has served the park well over time and should not be compromised by future plans.
- **Site Amenities** are also perceived to be lacking in comparison to other parks. Wayfinding, lighting, benches, drinking fountains, and restrooms all need to be improved in quantity and quality.



South Lakeshore Drive



Statue of the Republic

4 JACKSON PARK

c. Proposed Circulation Patterns

Key

- Existing Bicycle / Pedestrian Trails
- Proposed Bicycle / Pedestrian Trails
- Recommended On Street Bicycle Paths
- Major Vehicular Park Entrances
- Major Pedestrian Park Entrances
- Underpass



JACKSON PARK

Existing Major Buildings

- 1 Museum of Science & Industry
 - 2 Field House
 - 3 Golf Course Clubhouse
 - 4 La Rabida Children's Hospital
 - 5 63th Street Beach House
 - 6 59th Street Beach House
- Underpasses





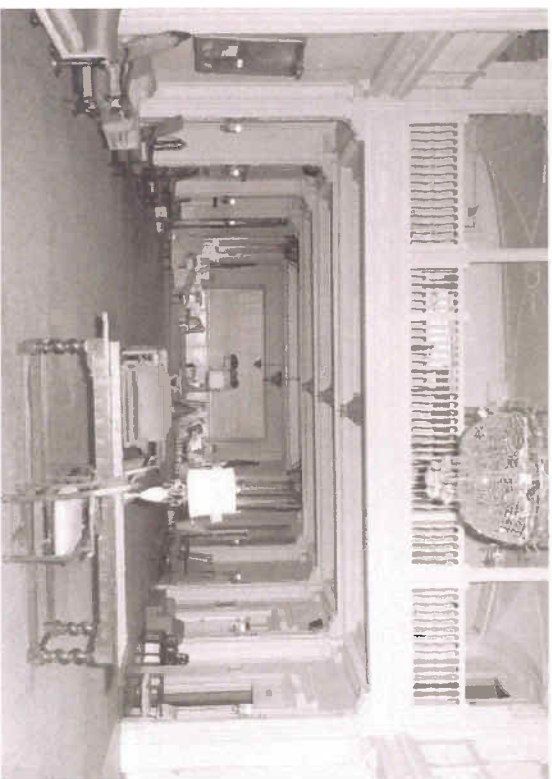
Priority 2

- A7** Extend breakwaters into the Lake south of La Rabida to 67th Street, to improve wildlife habitat.
- B4** Support the addition of a water taxi destination at the 59th Street Pier.
- B6** Create a water's edge promenade around the Yacht Harbor and Inner Harbor linking the 63th Street Beach House with the proposed focal point at Promontory Circle.
- C6** Provide a small parking lot for the Field House, with parking spaces for handicapped parking and drop-offs. Protect the existing mature trees.
- C10** Create well-marked and signaled pedestrian crossings at key selected intersections, especially along Stony Island at 59th, 63rd and 67th Streets.
- E4** Restore and upgrade the Music Court to hold small musical performances.
- E5** Create a dramatic focal point on Promontory Circle. Work with Jackson Park Yacht Club, Westrec, and La Rabida to use restrooms and concessions.



Priority 3

- B3** Restore the historic visual linkage between the East Lagoon and Inner Harbor and improve the natural habitat. Preserve existing mature quality trees according to the Forest Management Plan.
- C1** Consider enhancing Cornell Drive south of 60th Street as a park road by reducing pavement widths based on further traffic studies and community input.
- C2** Based on further pedestrian and vehicular traffic studies and community input about Jackson Park, including Marquette, Cornell, the existing round about at the Golden Lady and the future of Science Drive, consider eliminating Northbound Cornell between 65th and 67th Streets and reconfiguring the lanes on Stony Island between 65th and 67th Streets with a different connection to Hayes.
- C3** Following additional community input and studies for vehicular and pedestrian traffic, consider creating improvements to the round about at the Golden Lady.
- C5** Consider expanding the parking lot north of Hayes Drive at Cornell Drive.
- C9** Expand the shoreline east 100' at 67th Street.
- C11** Based on further pedestrian and vehicular traffic studies and community input, consider removing Marquette Drive between Richards Drive and Stony Island Avenue, and replace with a pedestrian/bicycle path.
- D6** Reconfigure the athletic fields baseball diamonds to accommodate the new visual lagoon connection.
- E8** Renovate and re-program the Iowa Building; consider recreational, cultural and restaurant uses.



Historic Interior View

1953-1956

The Club's Zenith -

Applicants outnumber the available memberships, who are placed on a waiting list. SSCC retires its mortgage and all of its bonded debt. In 1956, SSCC celebrates its fiftieth anniversary with a year of special activities and charitable events. Resident membership peaks at 2,006.

1967

An Attempt at Recovery -

The Club is refurbished in hopes of attracting new members, but the effort fails. The rules are debated to allow Jews and African-Americans to become members, but they are not changed.

1976-1979

Rehabilitation Begins -

A new concrete Beach House is built, and the Stables receive a new roof and are occupied by the Chicago Police Mounted Unit. In 1977, the Park District agrees to retain and rehabilitate the Clubhouse as a Cultural Center. In 1979, the Gatehouse is restored.

New 1999



1997

A Loss -

The Shooting Lodge is determined to be unsafe and beyond repair, and is demolished.

1955

1963-1966

Transition -

By 1963, residential memberships are falling, and the future of the SSCC is hotly debated in the fall club elections. In 1966 the equestrian shows are discontinued and the Stables closed.

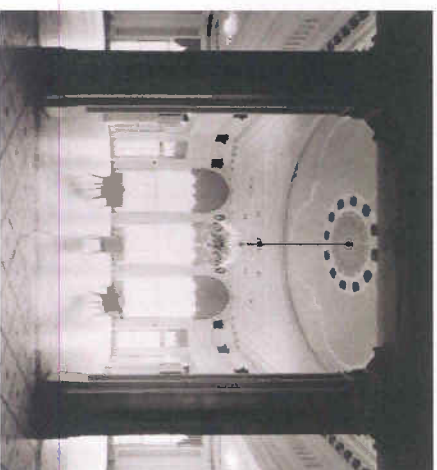
1965

1973-1974

A New Park -

Declining membership and rising debt lead to a decision in 1973 to close the club, by now the last private country club in the city. The land and buildings are acquired by the Chicago Park District in September 1974. Plans for demolition of the Clubhouse, Stables and Colonnade are announced, but community groups rally to save the facilities and a moratorium on demolitions is imposed.

1975



Historic Interior View

1985

1984-1997

New Life as a Cultural Center -

On January 8, 1985, with rehabilitation underway, the complex is rededicated as the South Shore Cultural Center (SSCC). In 1989, the restoration of the Clubhouse and its formal Colonnade are complete, and in 1990, the Garage and Stables are rehabilitated. The Clubhouse Ballroom is rehabilitated for performance and is rededicated as the Paul Robeson Theater in 1997.

1995

1999

New Plans -

The SSCC, along with Jackson Park and Washington Park, is included in the South Lakerfront Framework Plan, Phase 2 study area. The Park District commissioned a consultant, JJR Incorporated, to prepare a Framework Plan to guide the development of these three parks over the next 10 years. In addition, the Park District retained a consulting firm, McClier, to prepare a condition assessment report for all floors of the main structure.

2005

This park has the benefit of a number of pre-existing studies, including the 1990 SSCC Assessment, the 1992 Historic Preservation Analysis, and the 1998 Recommendations for the South Lakerfront. It is the intent of this Framework Plan to use these reports as a foundation and to advance their intent.

as the Beach House, should be removed or redesigned in a historically compatible style. Missing contributing features, such as the balustrade at the entry, should be reconstructed. Contributing features, such as the Stables, Gatehouse and Garages, and the Main Building, should be preserved and enhanced.

● Key Issues

- **Vehicular Access** to the SSCC is limited to a sole entry/exit point at 71st Street and South Shore Drive. This is a difficult intersection, complicated by the Metra tracks and the beginning of Exchange Avenue. Although challenging under regular conditions, during peak use this constricted access point causes long delays (both ingress and egress) and inhibits emergency vehicle access.
- **Maintenance** is especially important as it relates to the upkeep of the renovated Main Building, as well as other structures. Landscaping throughout the historic site needs to be better maintained to make the SSCC a Lakerfront show piece.
- **Tradition of Hospitality** is inherent with this site. The importance of how the Center looks and accommodates users is important to its success as a cultural center – a place where people return time and again.
- **Historic Context** is an ever-present consideration as one looks at upgrading present conditions and weighing future improvements. Noncontributing features that detract from the site's historic character, such

- **Environmental Enhancement** opportunities should be advanced when possible. Underdeveloped areas, such as the South Peninsula, should be explored for habitat creation and nature walks.



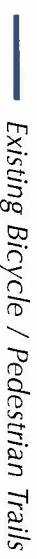
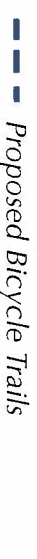


Gatehouse

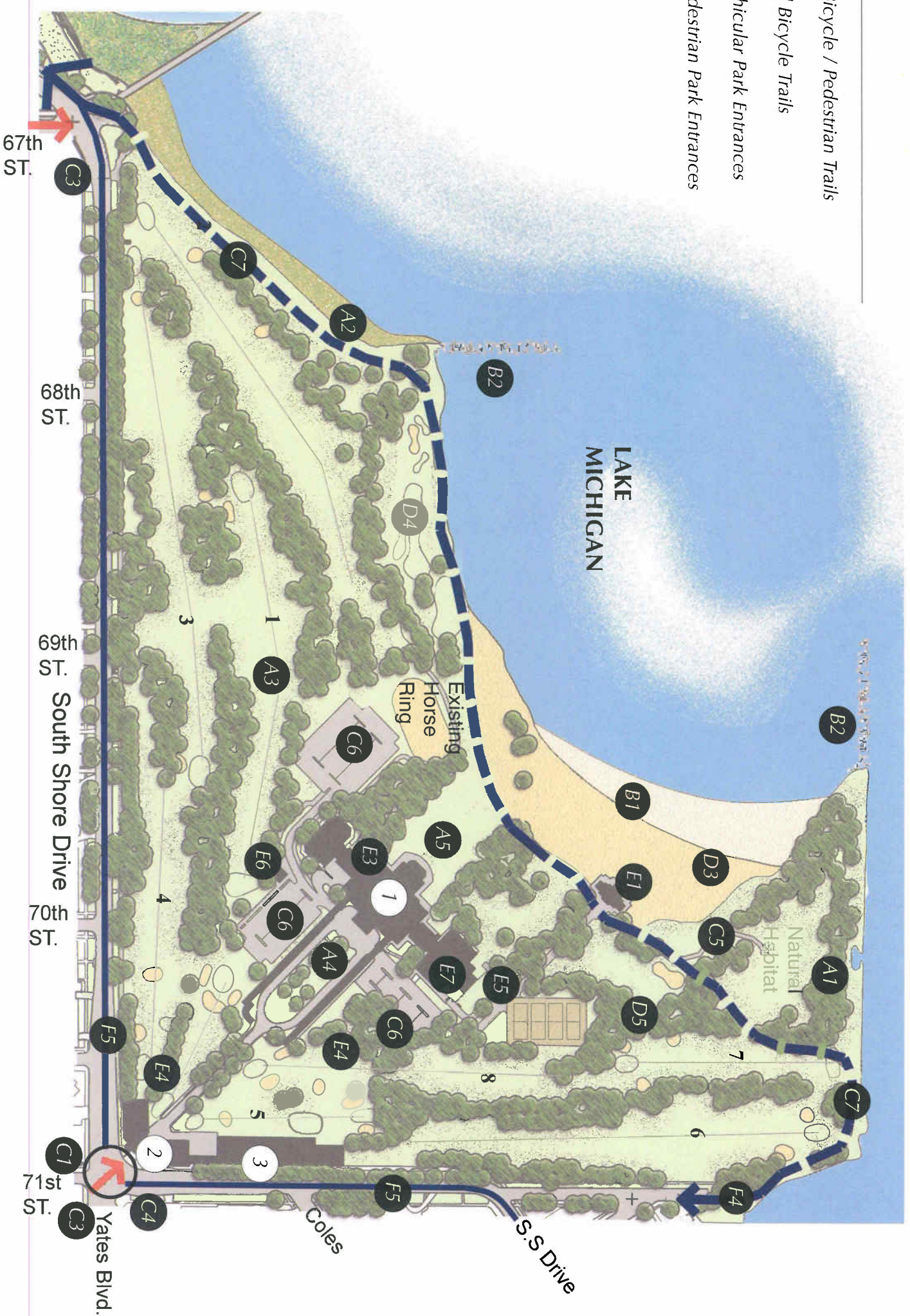


Main Building and Court of Honor

5 SOUTH SHORE CULTURAL CENTER

c. Proposed Circulation Patterns

- Key**
-  Existing Bicycle / Pedestrian Trails
 -  Proposed Bicycle Trails
 -  Major Vehicular Park Entrances
 -  Major Pedestrian Park Entrances

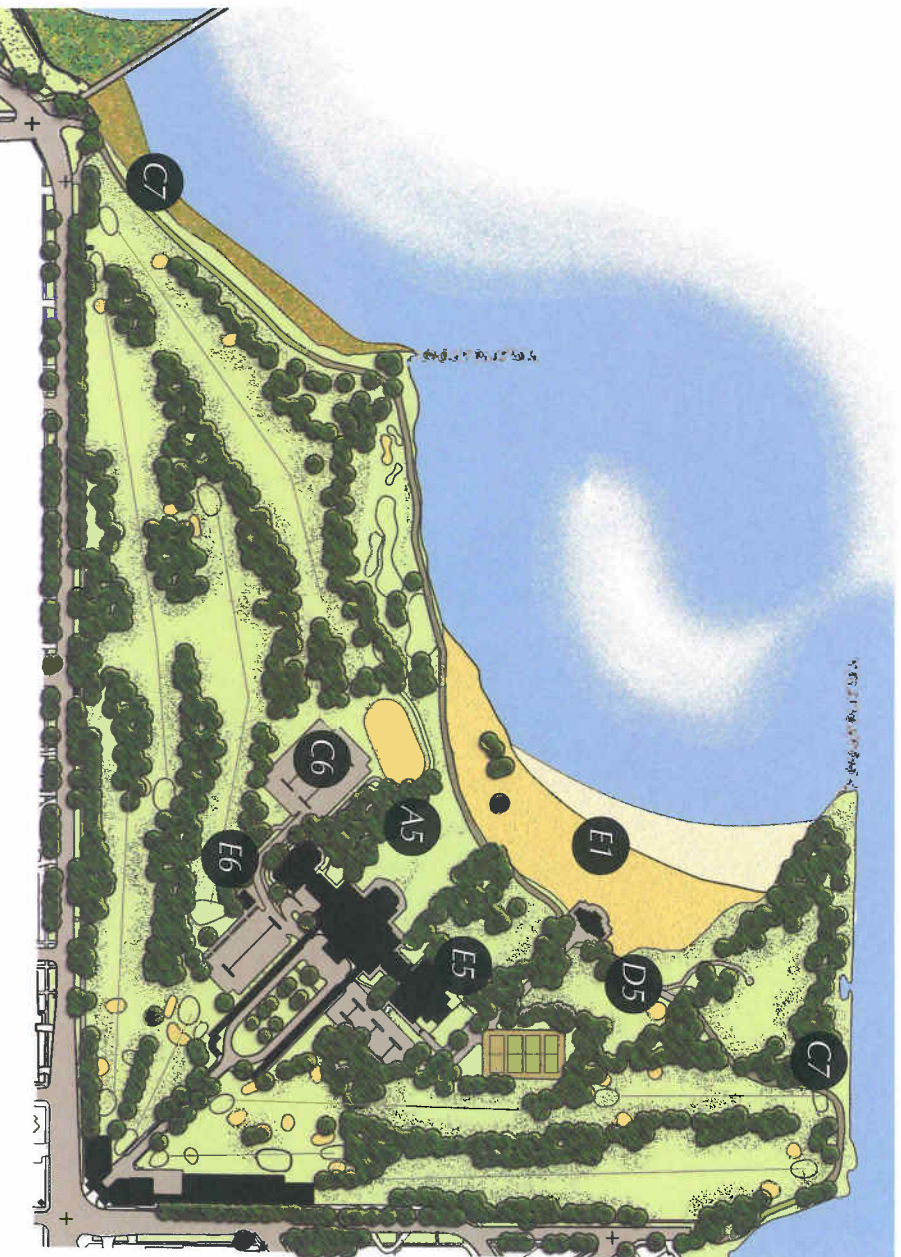


Existing Major Buildings

- 1 South Shore Cultural Center
- 2 Gatehouse
- 3 Stables

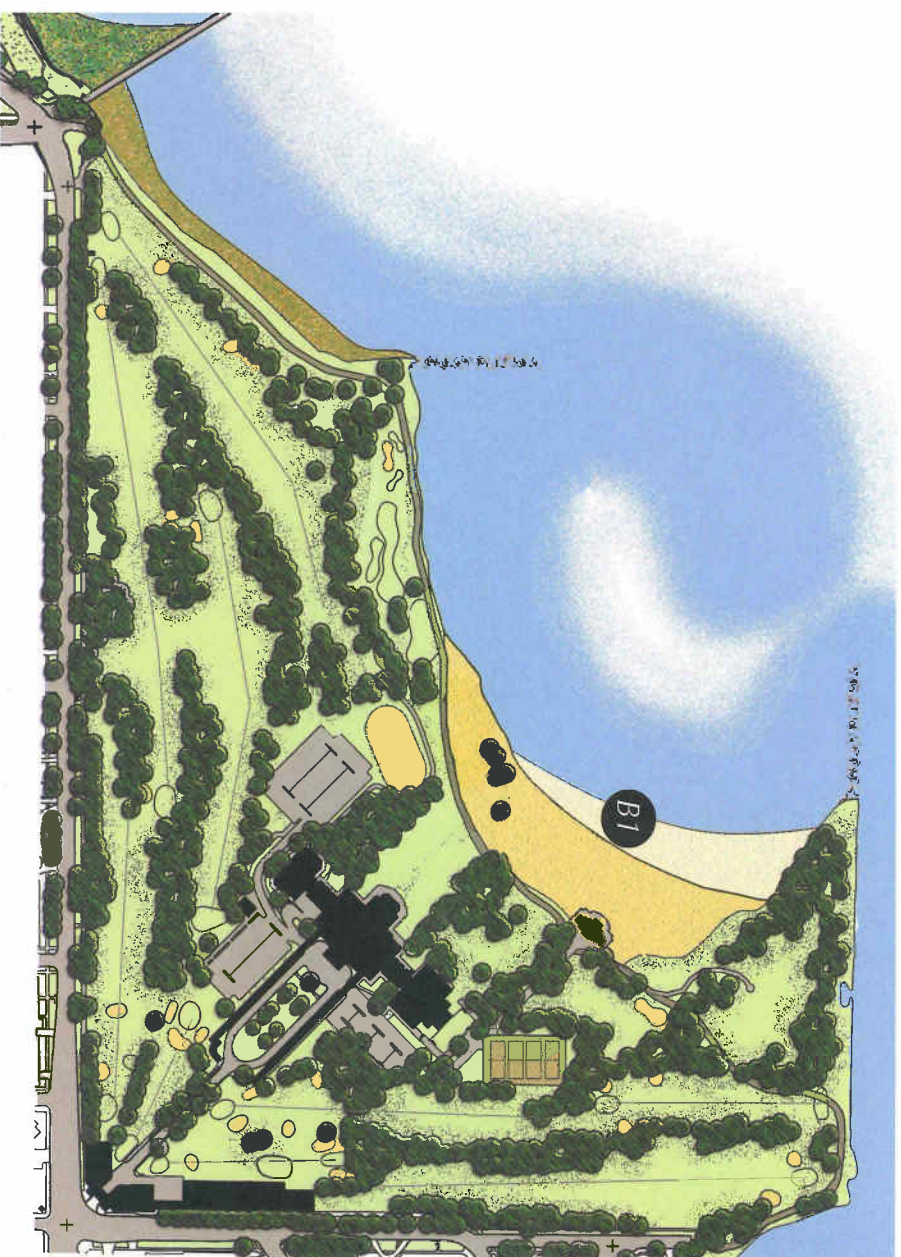


SSCC



Priority 2

- A5** Keep the open lawn area extending from the architectural center of the building to the beach and line it with an informal mass of trees.
- C6** Landscape and improve the existing vehicle parking areas to provide more efficient and safe parking.
- C7** In addition to the bicycle path on south Lake Shore Drive, add a 14-foot wide pedestrian/ bicycle path along the Lakefront from 67th Street to 71st Street. This path should be designed for occasional use as auto-egress at 67th Street during peak periods.
- D5** Add a children's playground that encourages creative play.
- E1** Maintain to the highest quality all existing permanent structures, with the exception of the existing Beach House. Build a new structure, architecturally compatible to the SSCC with modern restrooms, changing rooms, small boat rentals, nature exhibition space, and concessions to replace the Beach House.
- E5** Recreate bandshell, restore and upgrade the outdoor theater for performances, lectures, weddings, etc.
- E6** Create a golf check-in building with a food concession that is architecturally compatible with the Main Building. Consider locating it between the golf course parking lot and first hole.



Priority 3

- B1** Make the SSCC a destination on the coastal non-motorized boat trail.



SSCC

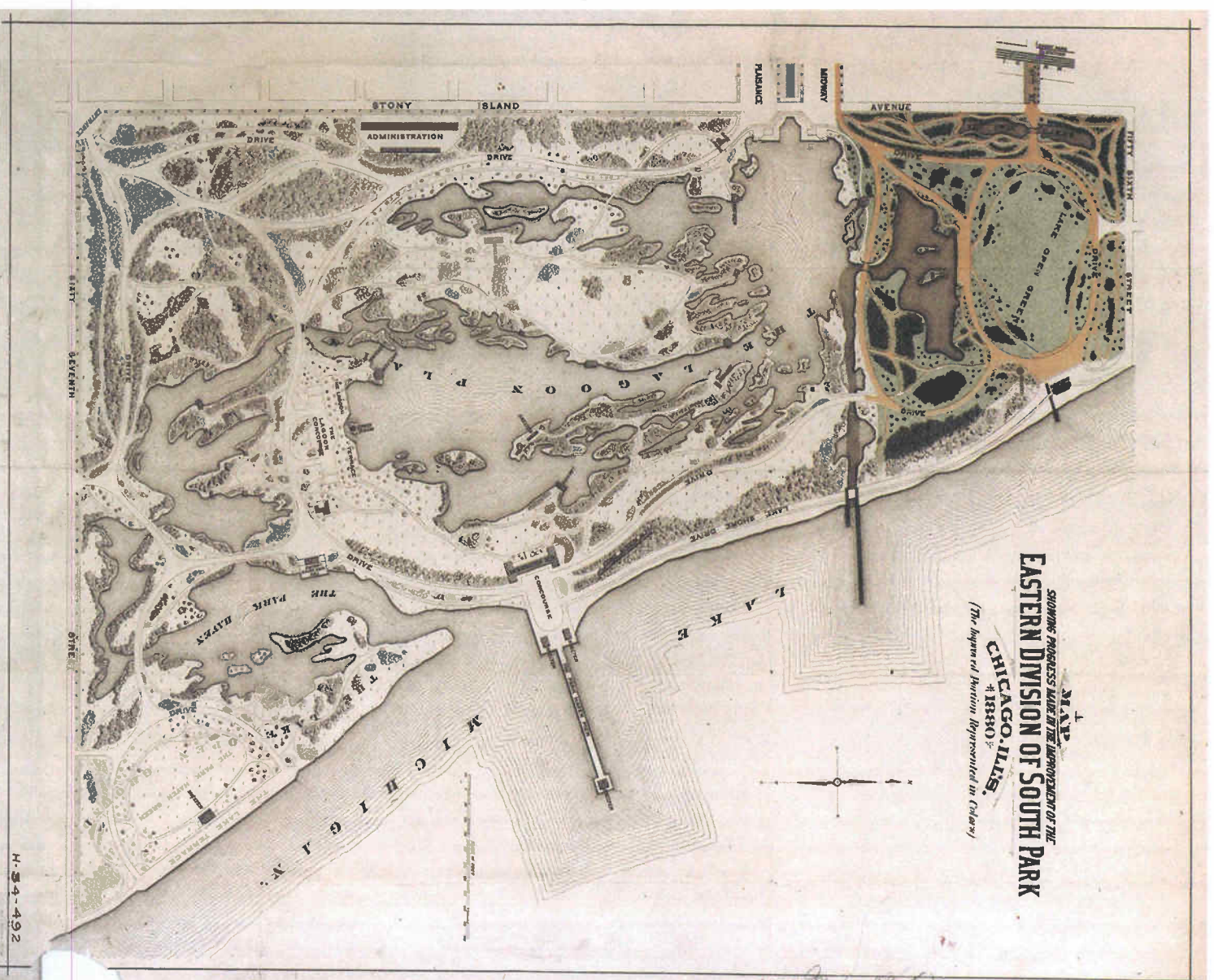


- 1890**
- Chicago is chosen as the site of the World's Columbian Exposition (WCE). Chicago politicians make such long-winded speeches in support of the application that New York newspapers label them representatives of "the Windy City."
- 1893**
- The WCE is held in Jackson Park and on the neighboring Midway Plaisance. Lasting from May 1st to October 10th, it host over 12 million visitors.

- 1894**
- Frederick Law Olmsted conducts an exhaustive survey of potential world's fair sites, recommending the still largely undeveloped Jackson Park site.
 - The decision is made to hold the WCE in Jackson Park.
 - Daniel H. Burnham & John W. Root are selected as supervising architects of the WCE.
 - After their appointment as its landscape architects, Olmsted and his then partner Henry Codman layout the fair. The design features interconnected lagoons lined with the major exposition halls, a formal Court of Honor with a reflecting basin, and the naturalistic Wooded Island.
- 1895**
- The North Pond Bridge (later known as the Clarence Darrow Bridge) is reconstructed.
 - Many of the WCE buildings burn to the ground. Among the exceptions are the German and Spanish Pavilions. The Spanish Pavilion was designed in imitation of the convent of La Rabida, Columbus' last stop before sailing in 1492. A replica of Columbus' flagship, the Santa Maria, is anchored in the yacht harbor near the convent.
 - Marshall Field endows a museum to house artifacts from the WCE. The Field Columbian Museum, later the Field Museum of Natural History, occupies the fair's Fine Arts Building.

- 1891**
- On January 15, architect John W. Root dies, leaving Burnham to supervise development of the fair. He appoints Charles Atwood as his assistant.
 - Construction of the WCE landscape begins.
- 1892**
- Fair buildings are constructed and landscape is improved. The development includes creation of the East & West Lagoons, Columbia Basin, the Convent Hill Wall, and Wooded Island, with the Japanese Pavilion known as the Ho-o-Den.
 - Atwood designs the fair's Palace of Fine Arts which, due to insurance and fire prevention concerns, has the only fire-vaulted interior on the fair grounds. Its permanent structure leads to its survival after the fair (to house the Field Museum from 1894 to 1919, and the Museum of Science & Industry from 1933 to the present).

- Olmsted, Olmsted & Eliot begin creating a new, post-fair landscape plan for Jackson Park.
- The 84 acres at the north end of the Park, first completed in 1880, are reconstructed.
- In accordance with the new Olmsted, Olmsted & Eliot plan, the Music Court and Yacht Harbor are built, and an outdoor gymnasium for men, women and children is installed on the west side of the Park at 63rd Street.
- In November, America's first-ever automobile race starts in Jackson Park, runs to Evanston, and return to finish at its starting point. The race took nearly nine hours and was won by a gasoline-powered car.



Frederick Law Olmsted Map of Jackson Park, 1880

- 1946**
- The Ho-o-den, the temple replica that served as the Japanese pavilion during the WCF, is burned down by two boys playing with matches.
- 1952**
- An addition to La Rabida Children's Hospital, designed by Friedman, Alschuler & Sincere, is begun. It will open in 1959.
- 1954**
- NIKE anti-aircraft missile launch pads and support facilities are installed east of the East Lagoon (the site is now occupied by the driving range).
- 1956**
- To compensate for playing fields lost to the NIKE site, the Bayou is filled-in north of the Hayes Drive bridge, destroying the physical and visual interconnection of the park's water system
 - Boat landings on the lagoons are removed as part of the rearrangement of harbor facilities due to the loss of the Bayou.
- 1957**
- The North Pond Bridge is dedicated to the memory of world-famous Chicago lawyer Clarence Darrow (1857-1938). A plaque will be installed in 1963.
 - The field house is built.
- 1962**
- Changes in technology and military policy lead to the removal of the NIKE missile site from the park.
- 1965**
- A plan is prepared for the Park by Johnson, Johnson & Roy. Its recommendations include 170 acres of landfill that would form four peninsulas with the largest at 63rd Street for a new harbor. The only part of the plan to be carried out is the extension of Lake Shore Drive through the Park.
 - A public outcry greets the plan to pave extensive areas of the Park. Nonetheless, construction begins and Lake Shore Drive is extended by widening existing right-of-ways in the Park.
- c1966**
- Dick Stearns, who first learned to sail at Jackson Park and went on to be a 1964 Olympic Silver Medalist in sailing, returns to make a presentation to the Jackson Park Yacht Club Star Fleet.
- 1972**
- Jackson Park is listed on the National Register of Historic Places.
- 1974**
- The Open Lands Project and CPD co-sponsor 'People in the Park', a program to encourage environmental education and public participation in ecological activities.
- 1978**
- The Paul Douglas Nature Sanctuary is designated on the Wooded Island.
- 1979**
- The Driving Range opens on the former NIKE Missile Site.
- 1981**
- The Japanese Gardens are extensively rebuilt and rededicated. The design, by Kaneji Domoto and CPD staff, includes a waterfall, the Moon Bridge, traditional Japanese plantings and circular paths.
- c1985**
- The U.S. Coast Guard Station on the yacht harbor is abandoned by the Coast Guard and turned over to the Chicago Park District.
- 1988**
- A fire causes extensive damage to the former Coast Guard Station.
- 1992**
- The former Coast Guard Station is restored and reopened as a restaurant.
 - Another addition is made to La Rabida Children's Hospital, designed by VOA Associates, Inc. Architects.
 - The statue of the Republic, installed in 1918 on Hayes Drive, is restored by the Park District in anticipation of the centennial of the World's Columbian Exposition.
 - To commemorate the 20th anniversary of Chicago's Partner Cities program with Osaka, Japan, and their new status as Sister Cities, the Japanese Garden is restored and renamed the Osaka Garden.
- 1994**
- A new traditional Japanese-style gate is designed by Kobayashi & Associates of Seattle for the entrance of the Osaka Garden.
- 1995**
- The 59th Street bridge is restored.
- 1997**
- The golf shelter is named in honor of South Side politician and avid golfer Cecil Partee.
- 1999**
- The 63rd Street Bathing Pavilion is restored and an interactive spray fountain, donated by the Max Schiff Foundation, is installed in the north courtyard of the pavilion.

